

**SPECIFICATIONS**

**CONTACT RATING** : Dependent upon contact material See page 42.

**ELECTRICAL LIFE** : 60,000 make-and-break cycles at full load.

**CONTACT RESISTANCE** : 10mΩ max. initial @ 2-4 VDC. 100 mA for both silver and gold plated contacts.

**INSULATION RESISTANCE** : 1,000 MΩ min.

**DIELECTRIC STRENGTH** : 1,000 V RMS min. @ sea level.

**OPERATING TEMPERATURE** : -30°C to 130°C.

**MATERIALS**

**CASE** : Diallyl phthalate (DAP)(UL94V-0).

**ACTUATOR** : Nylon,black standard.

**HOUSING** : Stainless steel.

**SWITCH SUPPORT** : Brass,tin plated.

**TERMINAL/CONTACT** : Silver or gold plated. See page 42.

**TERMINAL SEAL** : Epoxy

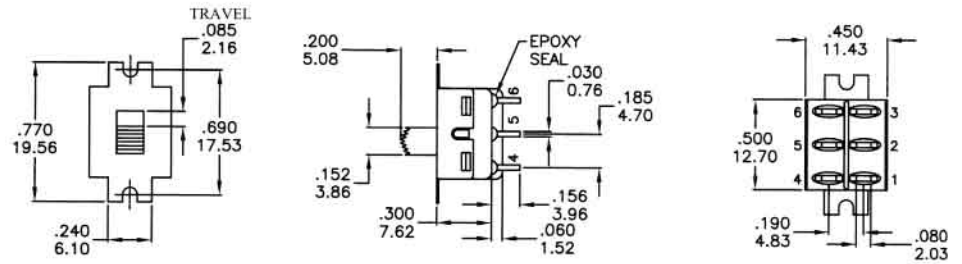
NO. POLES	MODEL NO.	SWITCH FUNCTION			CONNECTED TERMINALS/SCHEMATIC		
		POS.1	POS.2	POS.3	POS.1	POS.2	POS.3
SP	DS-12	ON	NONE	OFF	2-1	OPEN	2-3
	DS-13	ON	NONE	ON			
	DS-14	ON	OFF	ON			
DP	DS-23	ON	NONE	ON	2-1,5-4	OPEN	2-3,5-6
	DS-24	ON	OFF	ON			



SPDT Part No.DS-13C1A1QE-B

# DS800 Series

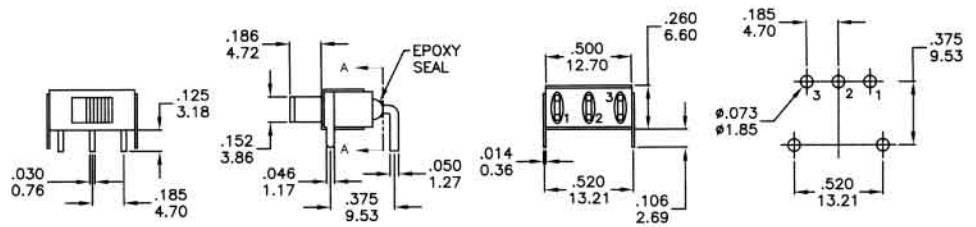
# Slide Switches



DPDT Part No. DS-23C1A1QE-B

**A3**

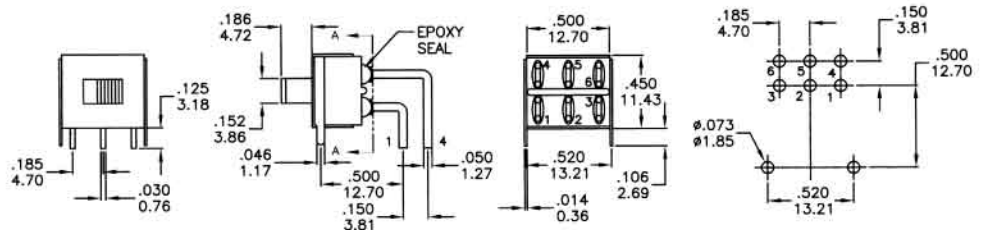
P.C. MOUNTING



SPDT Part No. DS-13C1A3QE

**A3**

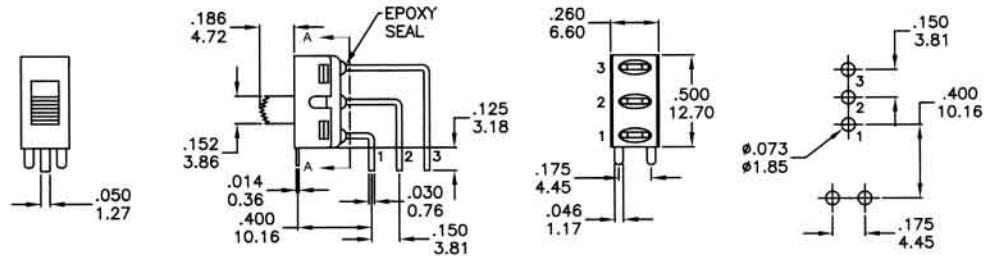
P.C. MOUNTING



DPDT Part No. DS-23C1A3QE

**A4**

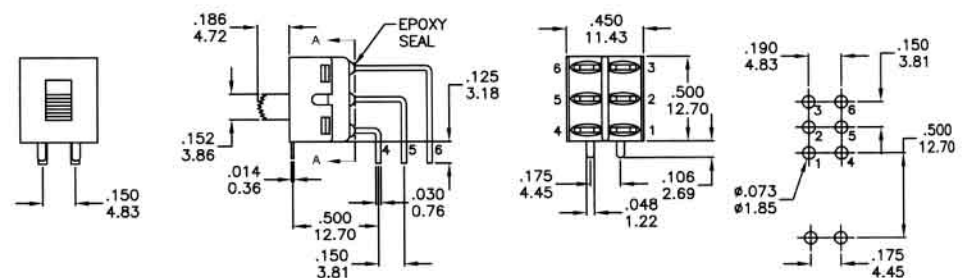
P.C. MOUNTING



SPDT Part No. DS-13C1A4QE

**A4**

P.C. MOUNTING

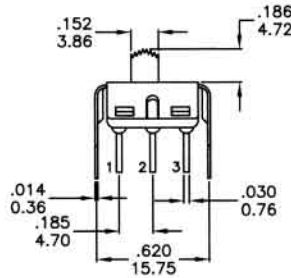
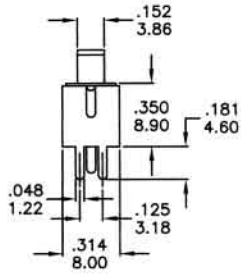


DPDT Part No. DS-23C1A4QE

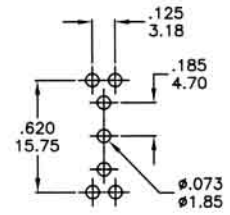
# DS800 Series

# Slide Switches

## VS1

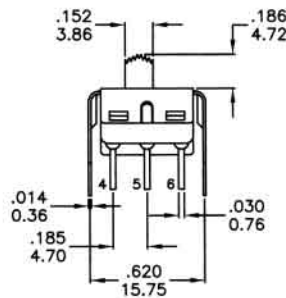
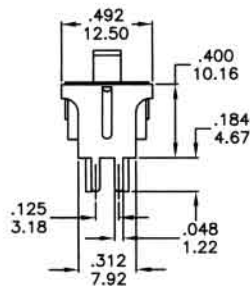


### P.C. MOUNTING

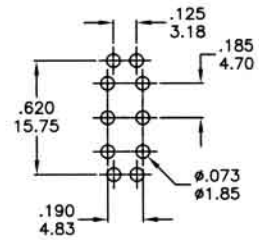


SPDT Part No. DS-13C1VS1QN

## VS1



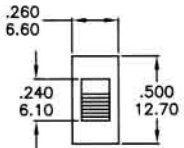
### P.C. MOUNTING



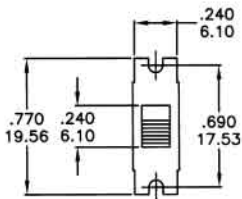
DPDT Part No. DS-23C1VS1QN

### MOUNTING EARS

"A" WITHOUT MOUNTING EARS

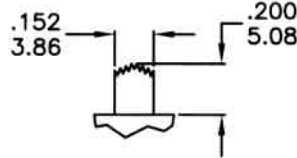


"B" WITH MOUNTING EARS

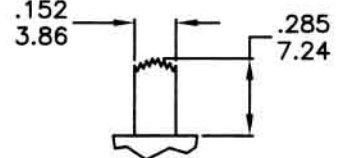


### ACTUATOR OPTIONS

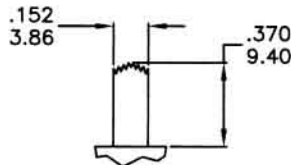
C1



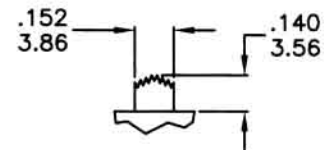
C2



C3

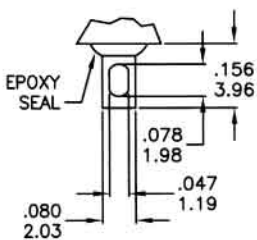


C4

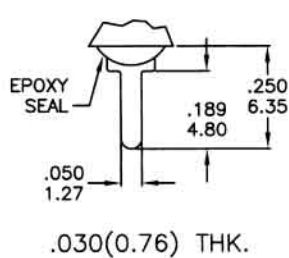


### TERMINATION OPTIONS

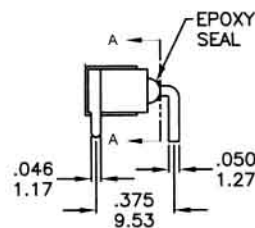
A1



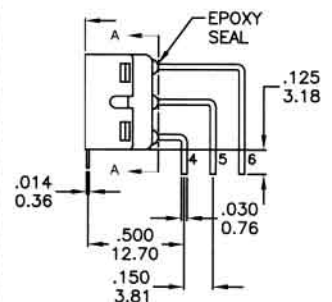
A2



A3



A4



## CONTACT RATING

### Q

**FIXED TERMINAL** : Silver plated over copper alloy

**MOVING CONTACT** : Silver plated over copper alloy

**RATING** : 6 Amps with resistive load@120VAC or 28VDC

3 Amps with resistive load@250VAC

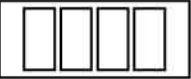
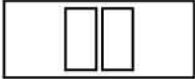
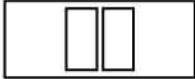
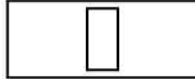

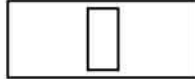
### G

**FIXED TERMINAL** : Copper alloy with gold plated over nickel plate

**MOVING CONTACT** : Copper alloy with gold plated over nickel plate

**RATING** : 0.4 Volt-Amps(VA) max. @20V max. (AC or DC)

## HOW TO ORDER

MODEL NO.	ACTUATOR	TERMINATIONS	CONTACT MATERIAL	SEAL	(EARS)
 DS-12 DS-13 DS-14 DS-23 DS-24	 C1 C2 C3 C4	 A1 A2 A3 A4 VS1	 Q=Silver G=Gold	 E=EPOXY N=NO EPOXY	 (A) (B)